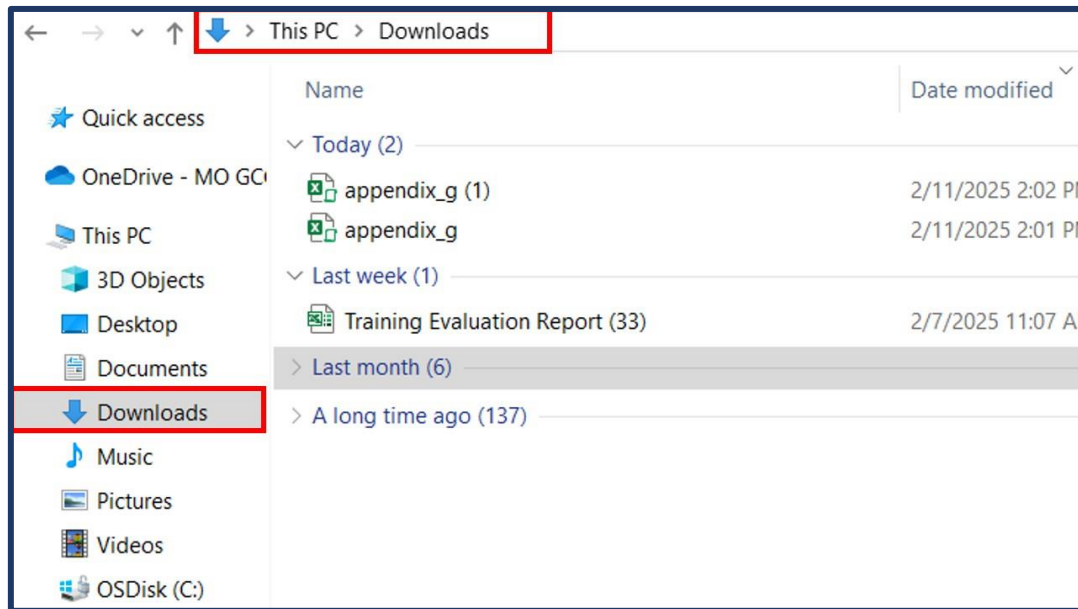
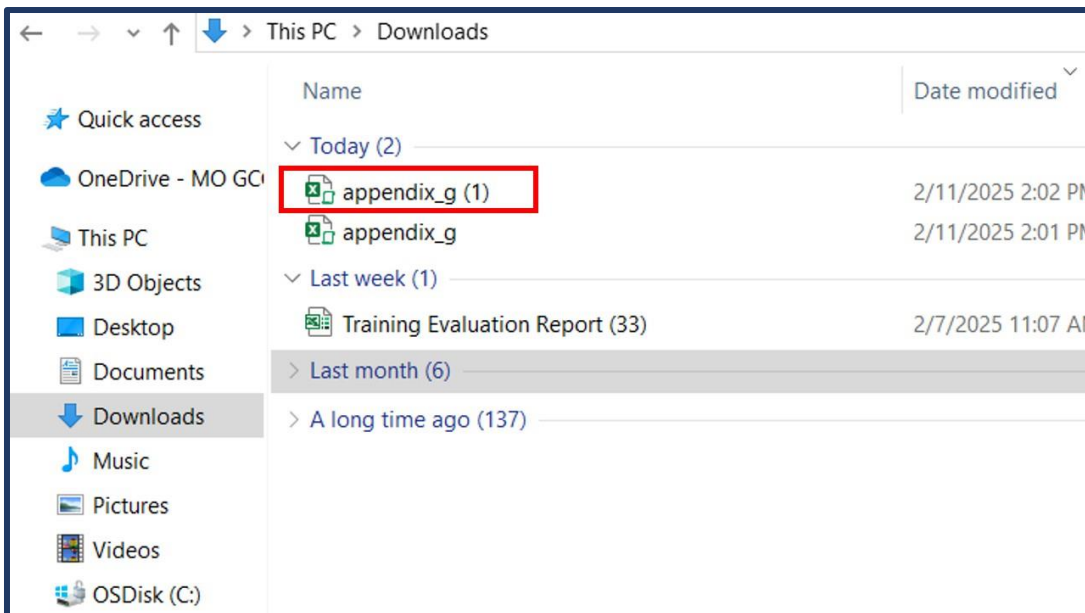


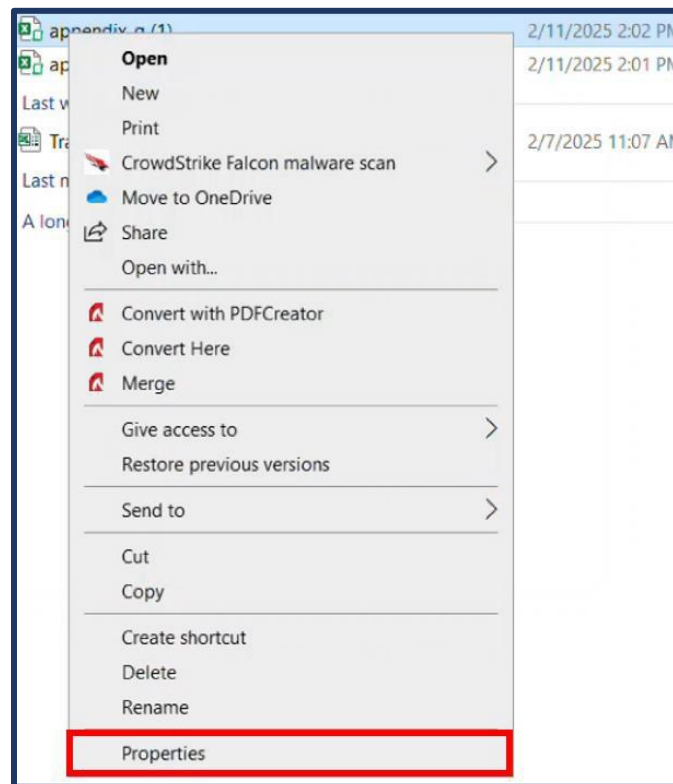
2. Go to the Downloads folder on your PC



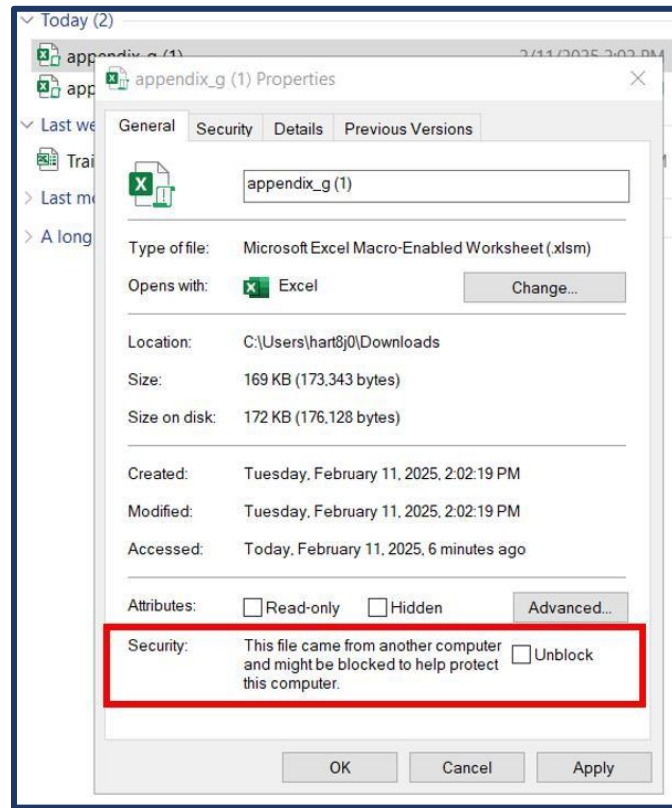
3. Right click on the Appendix G Excel document



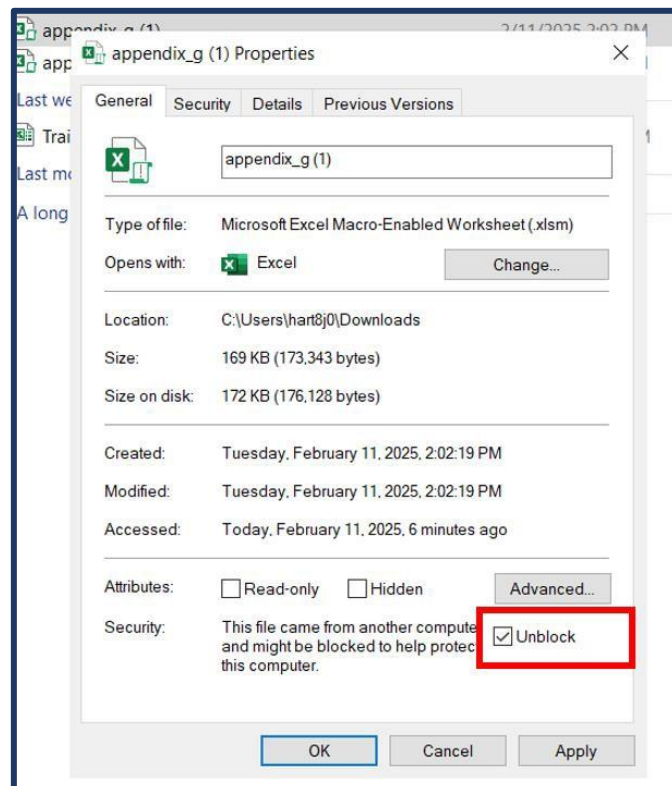
4. A pop-up box opens. Click on Properties at the bottom



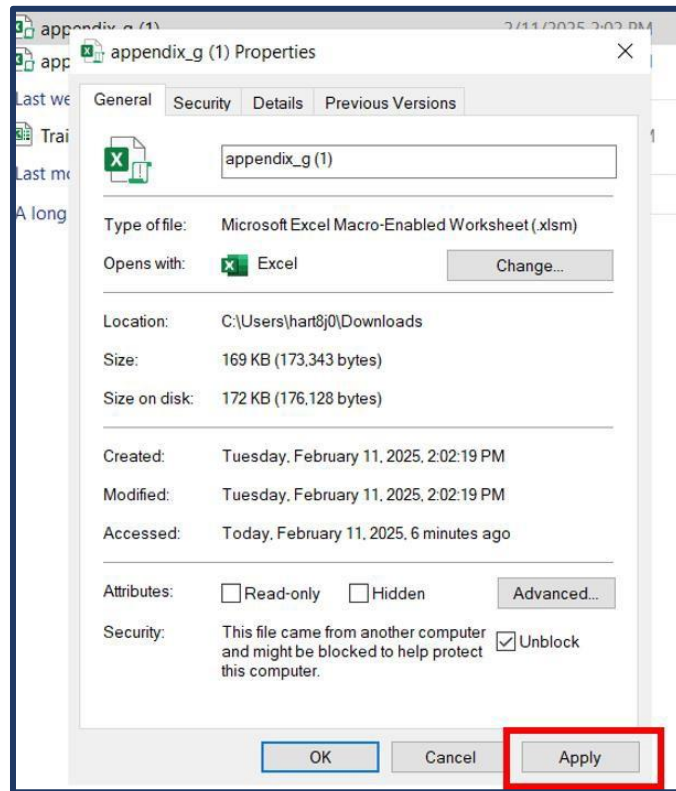
5. Find the Security Section



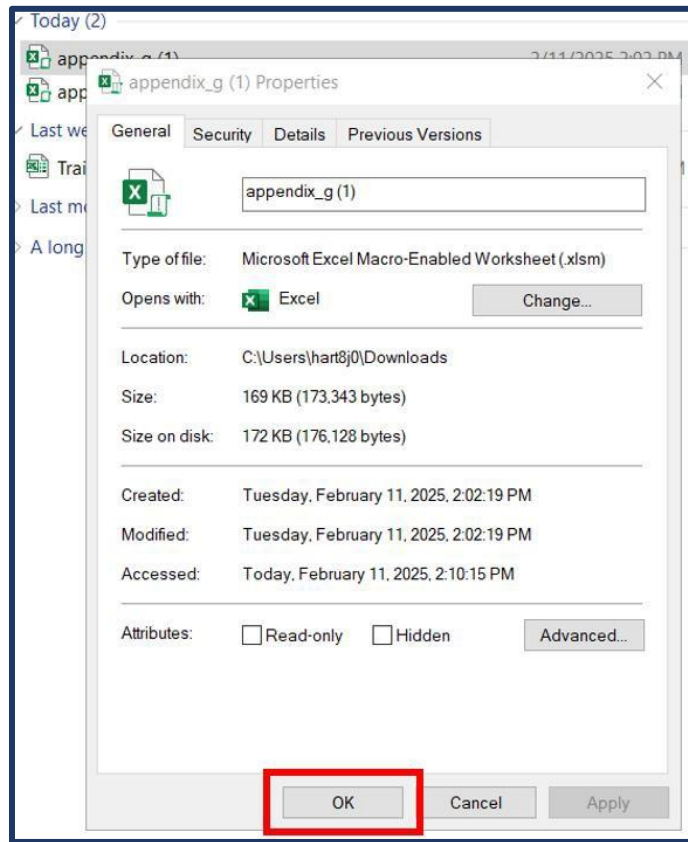
6. Click the box to Unblock



7. Click Apply



8. Click OK



9. This will take you back to the Downloads folder. Click Appendix G again, the CHIP Affordability Test Calculator should open.

The screenshot shows the 'CHIP-2025' Affordability Test Calculator interface. At the top, there is a title 'CHIP-2025' and a link 'How do I use this Calculator?'. Below the title, there are two input fields: 'Please Enter DCN for the Participant' and 'Select County of Residence for the Participant'. A sidebar on the left contains 'SMHB' and 'CHIP-2025' buttons. The main content area has several sections: 'Select Individual or Couples' with radio buttons for 'Individual' and 'Couples'; 'Select Number of Children' with radio buttons for 'One Child', 'Two Children', and 'Three or More Children'; 'Select Income Range for Household' with radio buttons for three income ranges: '(CHIP73) 150% - 185% of FPL...affordability standard = \$97', '(CHIP74) 186% - 225% of FPL...affordability standard = \$159', and '(CHIP75) 226% - 300% of FPL...affordability standard = \$242'; and 'Select Age of the Adult(s) in the Household' with radio buttons for four age ranges: '21 to 29 years', '30 to 39 years', '40 to 49 years', and '50 years or greater'. At the bottom, there is a 'Test CHIP Affordability' button and a large yellow rectangular area.

10. Follow directions in [Appendix F – CHIP Affordability Test Calculator Instructions](#)